



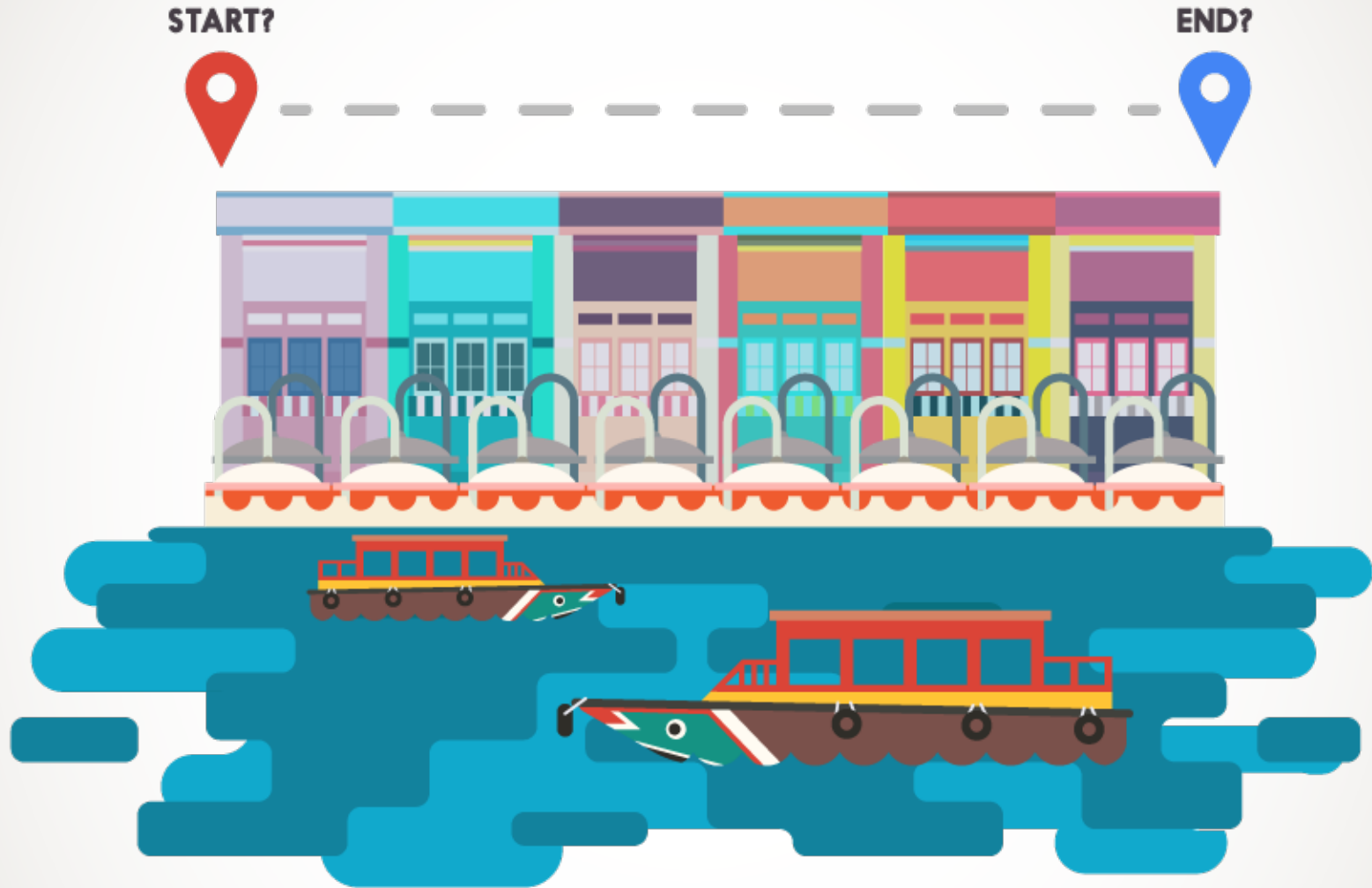
INTRODUCTION

CLASS 1:
Becoming an Online Sleuth



SMART SEARCHING ONLINE

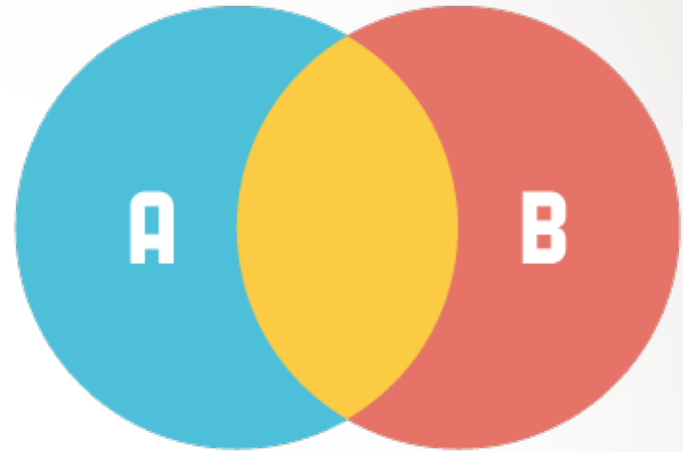
CLASS 1:
Becoming an Online Sleuth



Boolean Operators

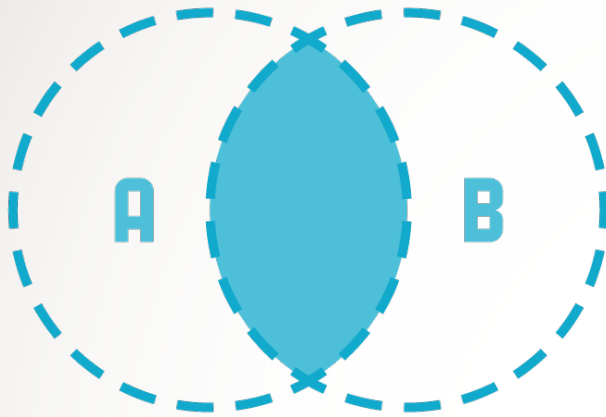
are simple words (such as AND, OR, and NOT) used as conjunctions to combine or exclude keywords in a search, resulting in more focused and productive results.

Source: <https://library.alliant.edu/screens/boolean.pdf>

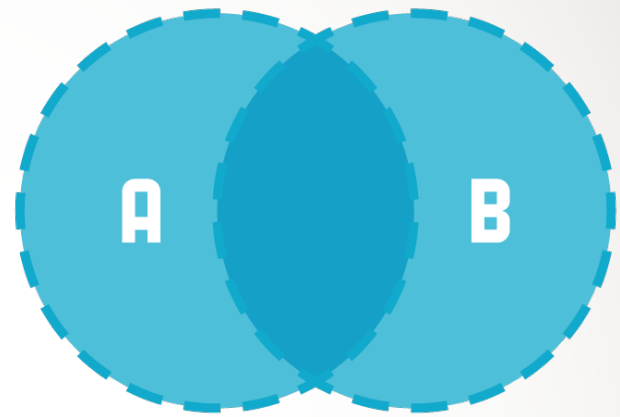


BOOLEAN OPERATORS

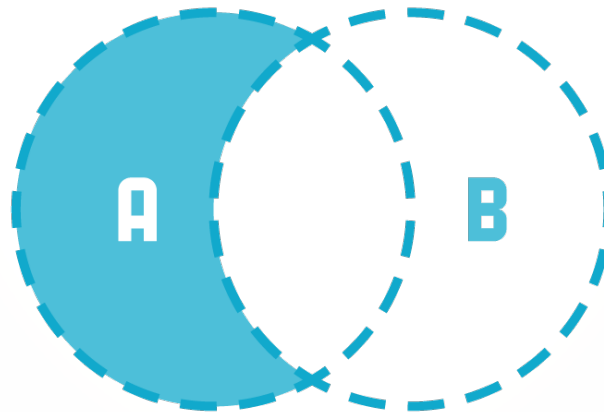
CLASS 1:
Becoming an Online Sleuth



AND



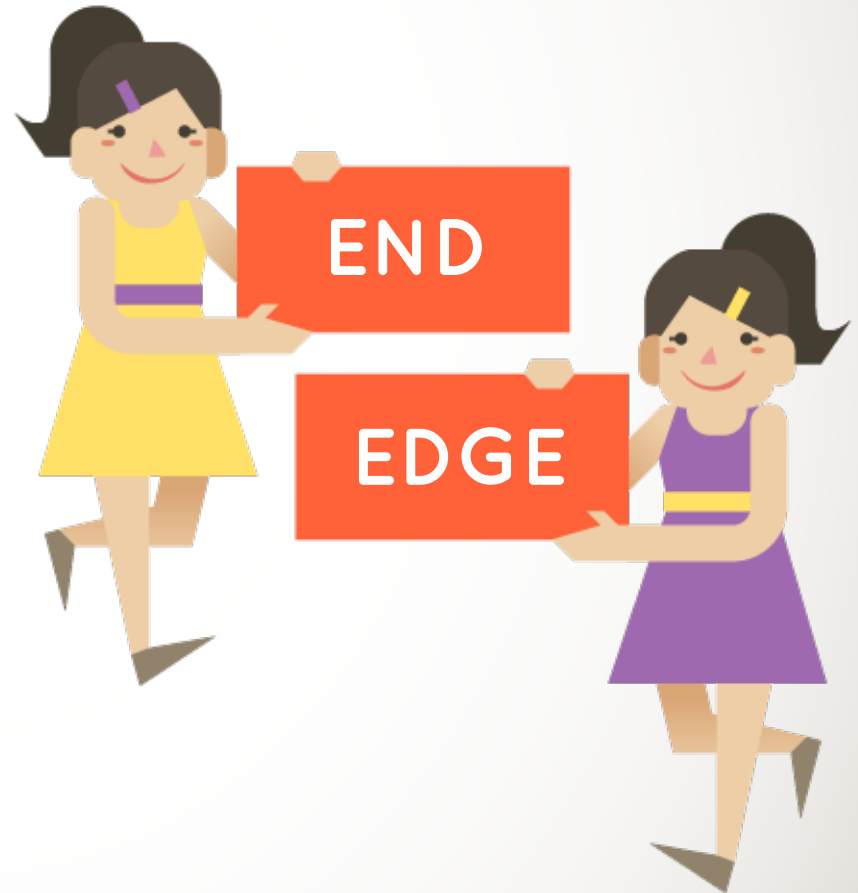
OR



NOT

SYNONYMS

a word that has the same meaning as another word in the same language.



EVALUATING ONLINE SOURCES

CLASS 1:
Becoming an Online Sleuth



HOW S.U.R.E. ARE YOU ?

CLASS 1:
Becoming an Online Sleuth



SOURCE



UNDERSTAND



RESEARCH

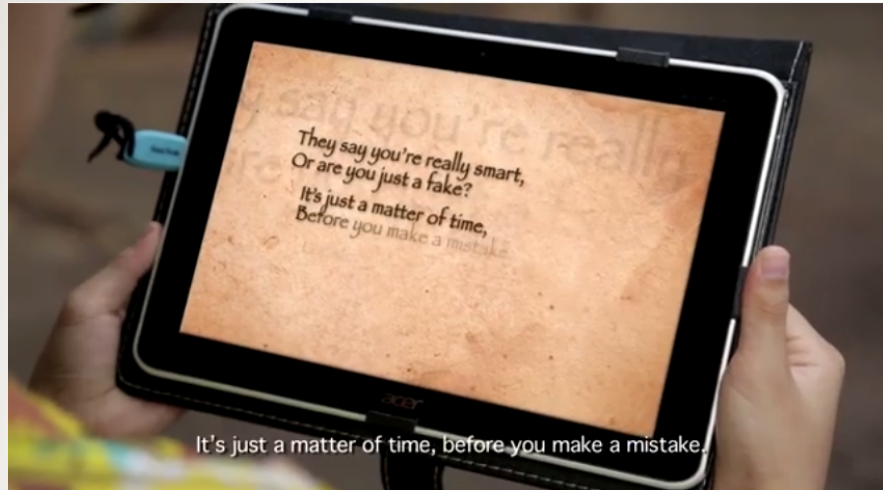


EVALUATE

HOW S.U.R.E. ARE YOU ?

CLASS 1:
Becoming an Online Sleuth

(Primary Level)



SURE Lok Hom and the Case of the Mysterious Map

(Secondary Level)



SURE Lok Hom and the Case of Cosplay Showdown

Click on the images to go to the YouTube Video

TYPES OF WEB SOURCES

CLASS 1:
Becoming an Online Sleuth



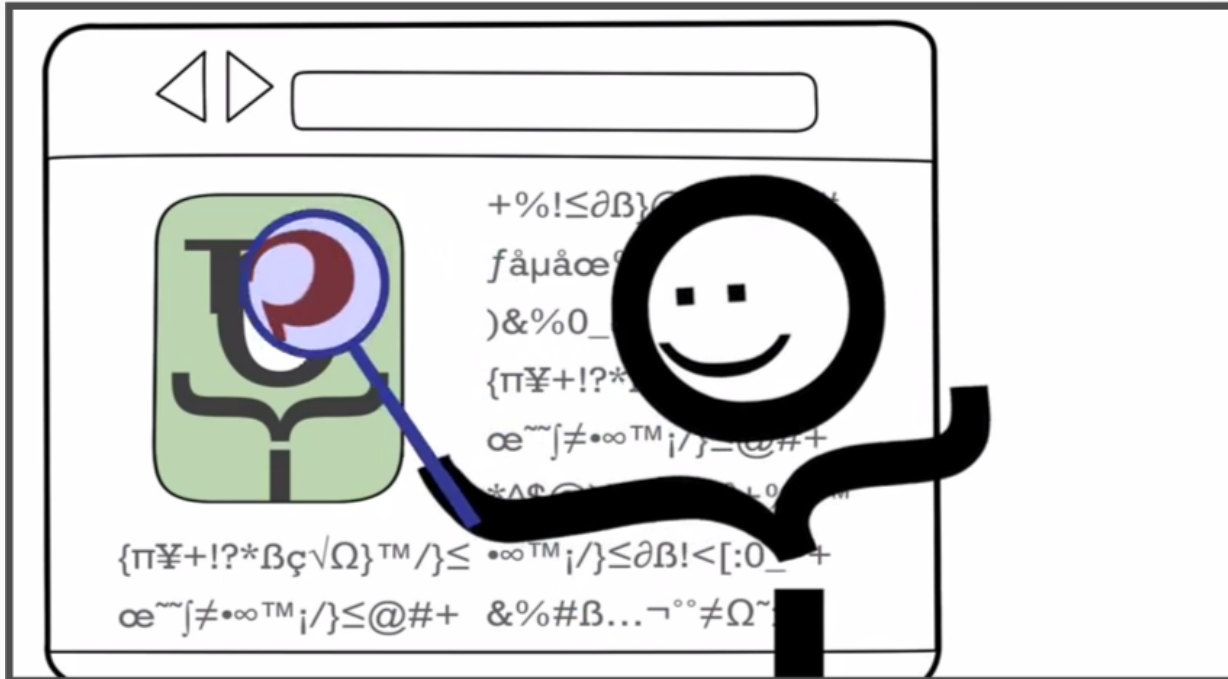
Using the research topic of *'Where does Singapore River start and end?'*, consider the following web sources:

- [Infopedia Article](#)
'Source of the Singapore River' Infopedia
- [River Cruise Singapore Website](#)
- [Personal Research](#)



**Singapore River:
Flowing Quietly Through Time**

Click on the image to go to the YouTube Video



Detecting Lies and Staying True

Click on the image to go to the YouTube Video

RULE OF THUMB:

Don't believe everything on the internet. Always cross-check facts!



AACCO EVALUATION CRITERIA

CLASS 1:
Becoming an Online Sleuth



ACCURACY



AUTHORITY



COVERAGE

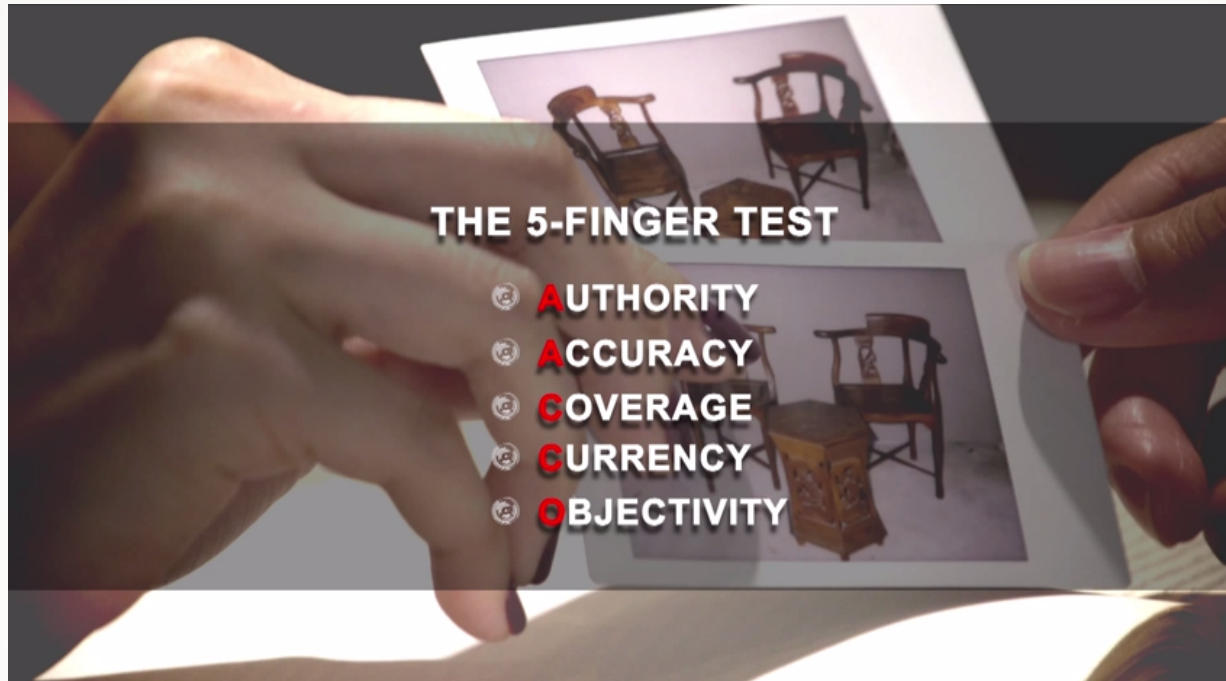


2014

CURRENCY



OBJECTIVITY



SURE Lok Hom and the Case of Antique Chairs

Click on the image to go to the YouTube Video

URL ANALYSIS

CLASS 1:
Becoming an Online Sleuth



“What are the native plants in Singapore?”

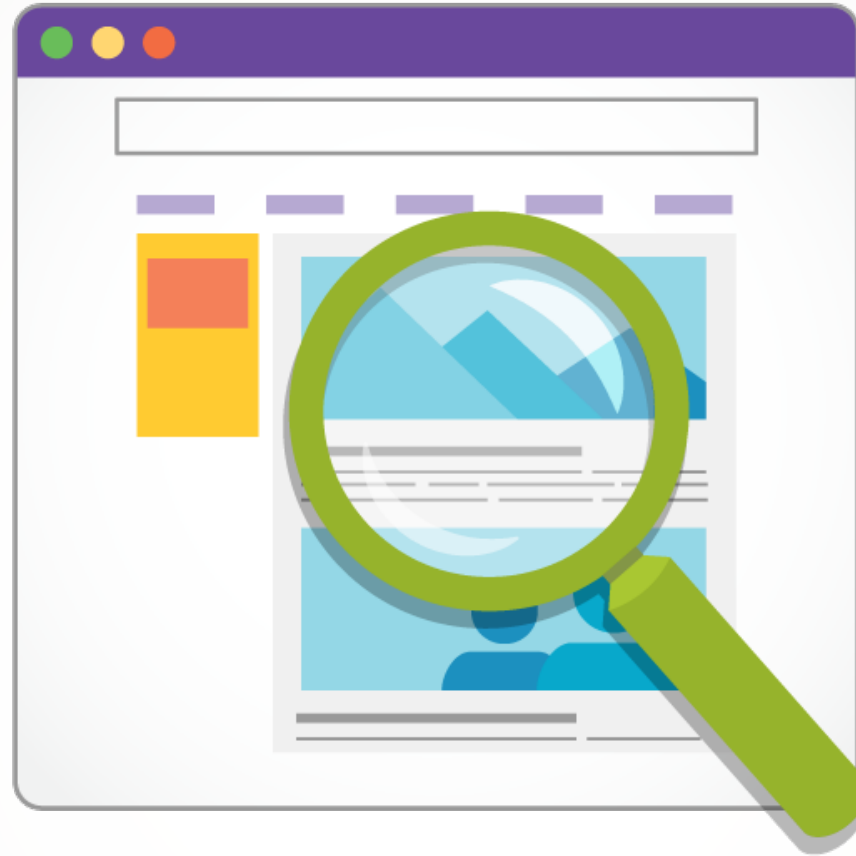


Consider the following sources:

- [Flora Singapura \(commercial\)](#)
- [Nparks \(government\)](#)
- [National University of Singapore \(educational\)](#)

Other Links:

- ['Helping native plants bloom' Wild Singapore](#)
- [Biodiversity Conservation in Singapore](#)
- [Ehow](#)
- [Garden Guides](#)



For this activity, you may refer back to the sources that were discussed in the previous session.



You can also consider the following other sources:

- [NewspapersSG](#)
- [Archives Online Maps and Building Building Plans](#)
Search for 'Singapore River'
- [National Heritage Board, 'Singapore River Trail'](#)
- [National Environment Agency, 'The Singapore River Story'](#)
- [PUB, 'The Singapore Water Story'](#)

COPYRIGHT

CLASS 1:
Becoming an Online Sleuth





