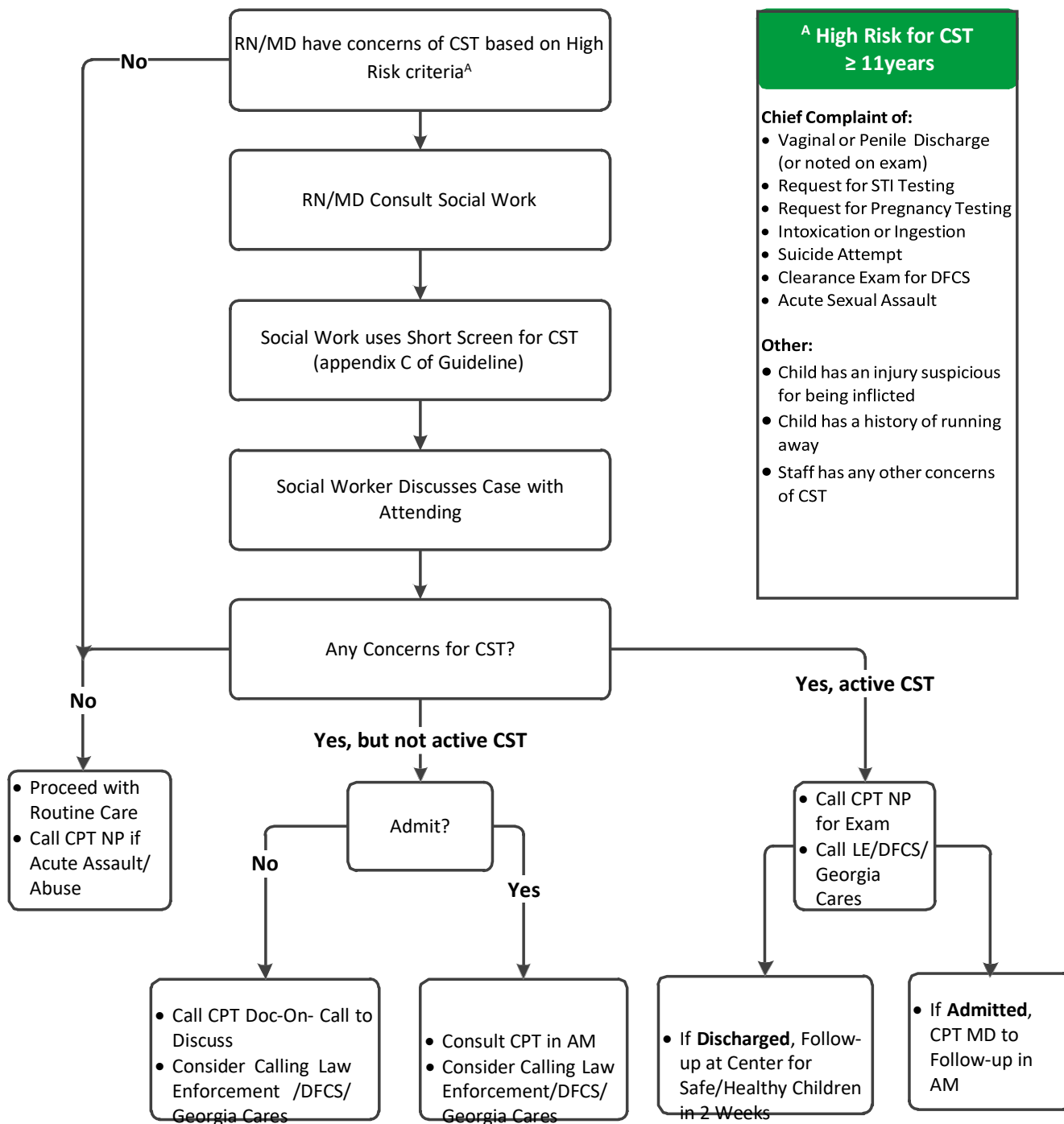


Child Sex Trafficking (CST) and Commercial Sexual Exploitation Inpatient Guideline (CSEC) Emergency Department

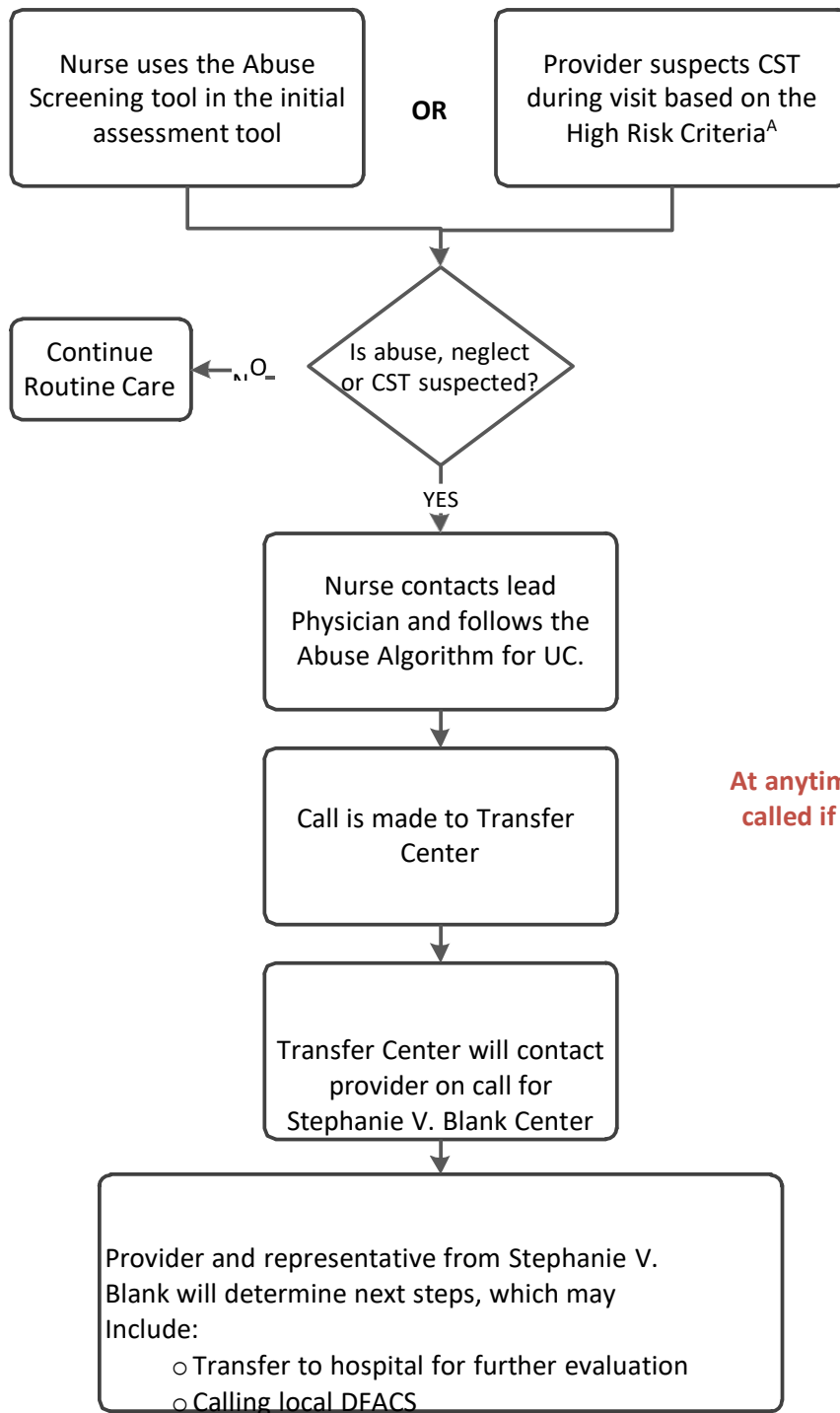


Terms:

CST – Child Sex Trafficking

CPT – Child Protection Team

Child Sex Trafficking (CST) and Commercial Sexual Exploitation Inpatient Guideline (CSEC) Urgent Care & Primary Care



^A High Risk for CST ≥ 11years

Chief Complaint of:

- Vaginal or Penile Discharge (or noted on exam)
- Request for STI Testing
- Request for Pregnancy Testing
- Intoxication or Ingestion
- Suicide Attempt
- Clearance Exam for DFCS
- Acute Sexual Assault

Other:

- Child has an injury suspicious for being inflicted
- Child has a history of running away
- Staff has any other concerns of CST

At anytime, local law enforcement may be called if staff feels there is a flight risk or dangerous situation

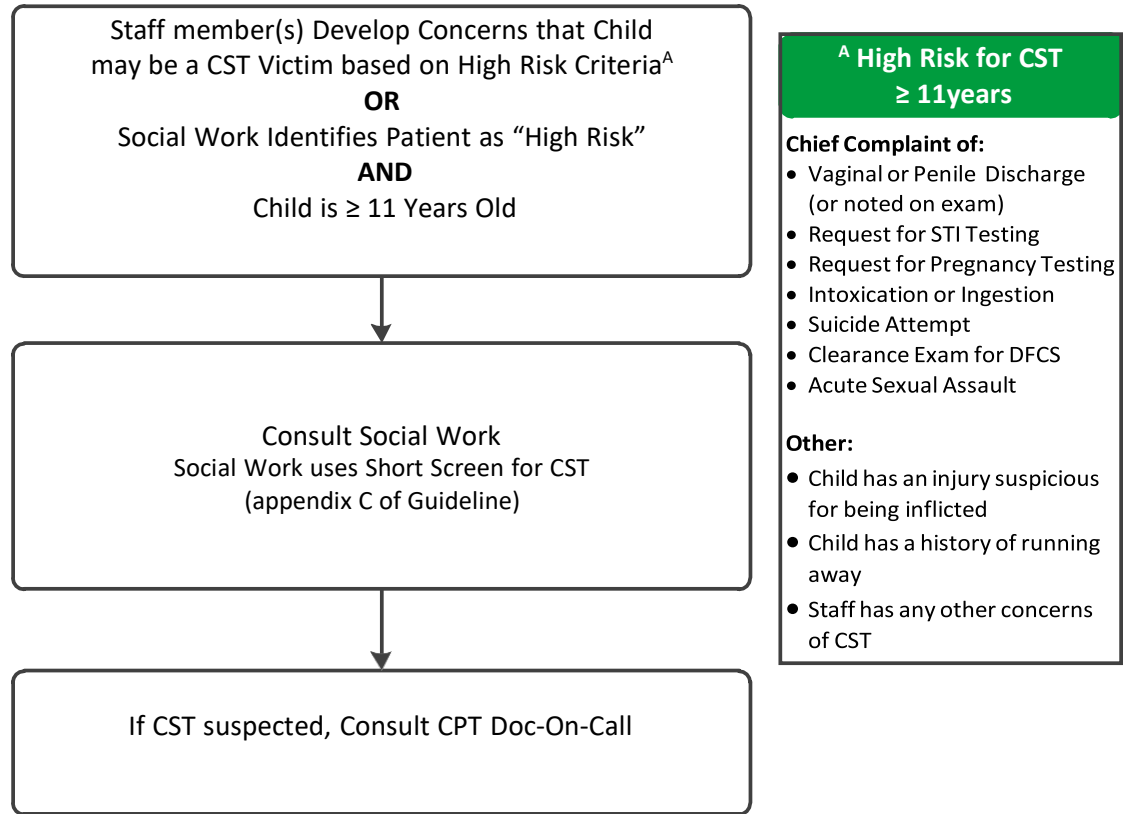
Terms:

CST – Child Sex Trafficking

CPT – Child Protection Team

Child Sex Trafficking (CST) and Commercial Sexual Exploitation Inpatient Guideline (CSEC)

Applied to Hospital Personnel who have Concerns of CPT and Not Addressed in the Emergency Department



Terms:

CST – Child Sex Trafficking

CPT – Child Protection Team